

ISOFTWISE

# KSS Parental Controls

---

User Guide



## Table of Contents

Web Blocking.....	3
Category Based .....	3
Custom Site Lists .....	4
Keyword Based.....	5
Time Limits .....	6
Schedule Internet Usage Times.....	6
Limit Time Spent Online .....	7
Email Blocking .....	8
Managing Email Contacts.....	8
Program Controls .....	9
Category Based .....	9
Block Custom Programs .....	10
Activity Monitoring .....	11
Screen Snapshots Recording.....	11
Chat/IM Activity Recording.....	11
Web Site Activity Recording .....	11
Email Activity Recording.....	12
Program Activity Recording.....	12
Instant Alerts.....	13
Alert Sensitivity .....	13
Email Setting .....	14
User Management .....	14
Add a New User.....	15
Duplicating a User Profile.....	16

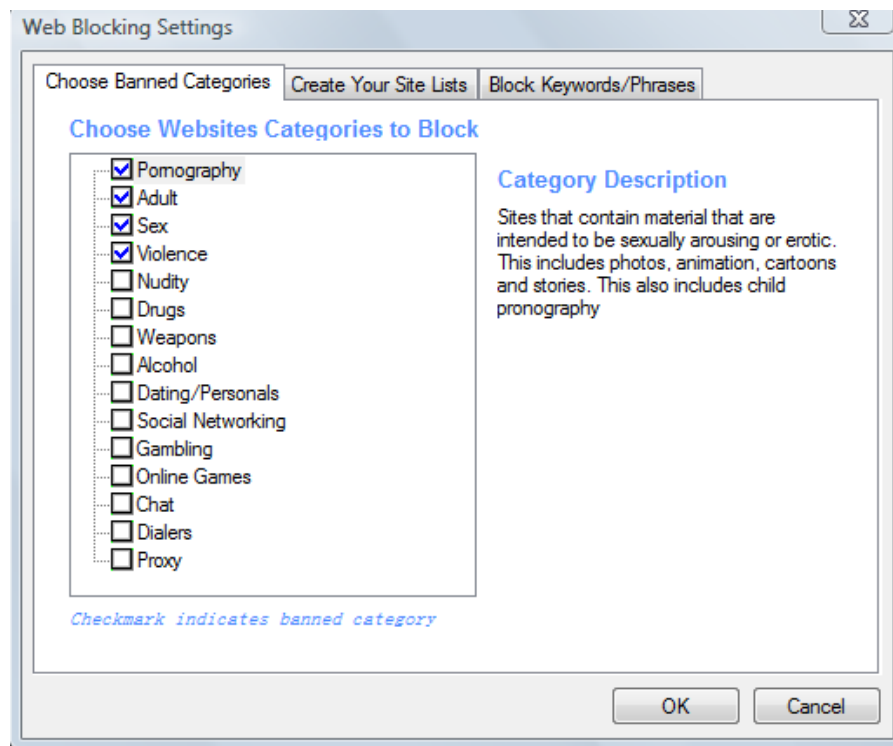
## Support

**Website**            <http://www.isoftwise.com>  
**Knowledge Base**   <http://www.isoftwise.com/support/kss-parental-control.html>  
**E-Mail**             [support@isoftwise.com](mailto:support@isoftwise.com)

## Web Blocking

While the Internet represents an infinite universe of knowledge and entertainment, there also exists an equally vast amount of content that you may deem inappropriate for your home or office. KSS Parental Control puts control of both images and words in your hands with the Web Blocking feature. There are three different ways to block websites. You can block sites by category, by entering the URL into a custom site list and by keyword.

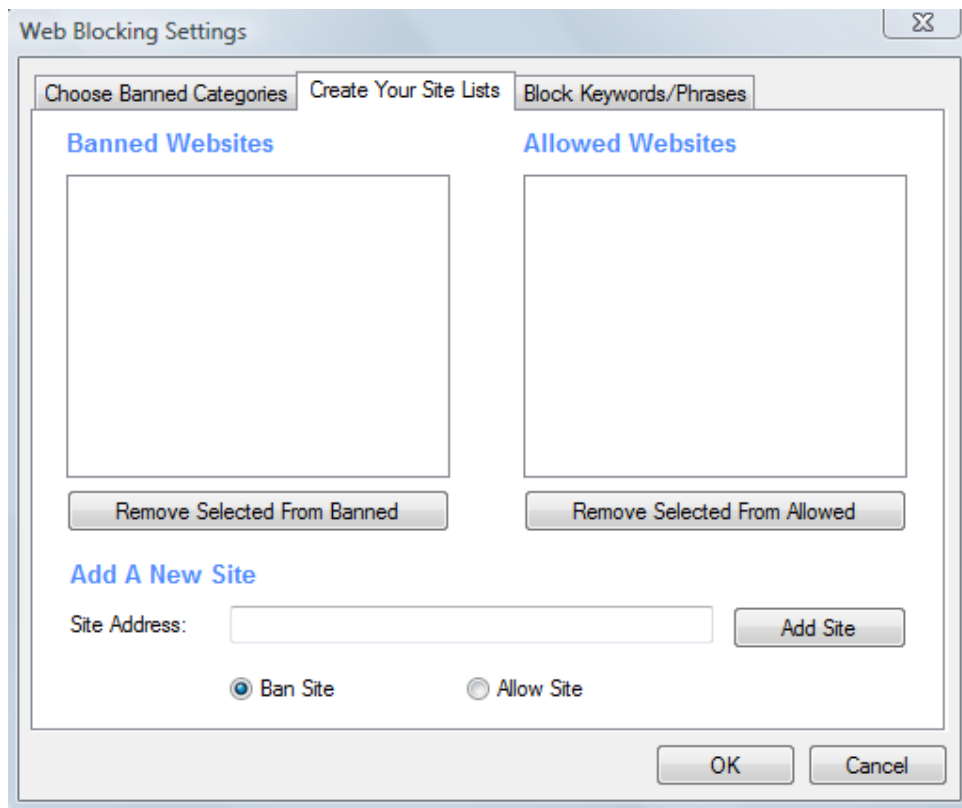
### Category Based



This feature allows you to block up to 15 categories. By clicking on the category names you will see a description of the kind of content that will be blocked. Simply identify the category you wish to ban, check it and a mark will appear indicating a blocked category. Once your categories are chosen, click "OK" button.

If a category is marked and a user tries to access it, KSS Parental Control will automatically block it and alert the program's contact person. For instance, if mom has banned adult only sites and 14 year-old Kristin attempts to access one, mom will automatically be alerted via e-mail.

## Custom Site Lists



This feature takes control to the next level by allowing you to customize web blocking by listing sites you wish to allow or deny access to. For instance, if 16 year-old Josh is grounded from his favorite social network then mom or dad can ban that specific site through this feature guaranteeing that Josh be denied access. In turn, this function can be used to list a set number of sites allowed by entering pre-approved URLs.

### ***Banning a Website***

To ban a specific site, simply click the "Ban Site" button and type the URL into the "Site Address" box then click "Add Site."

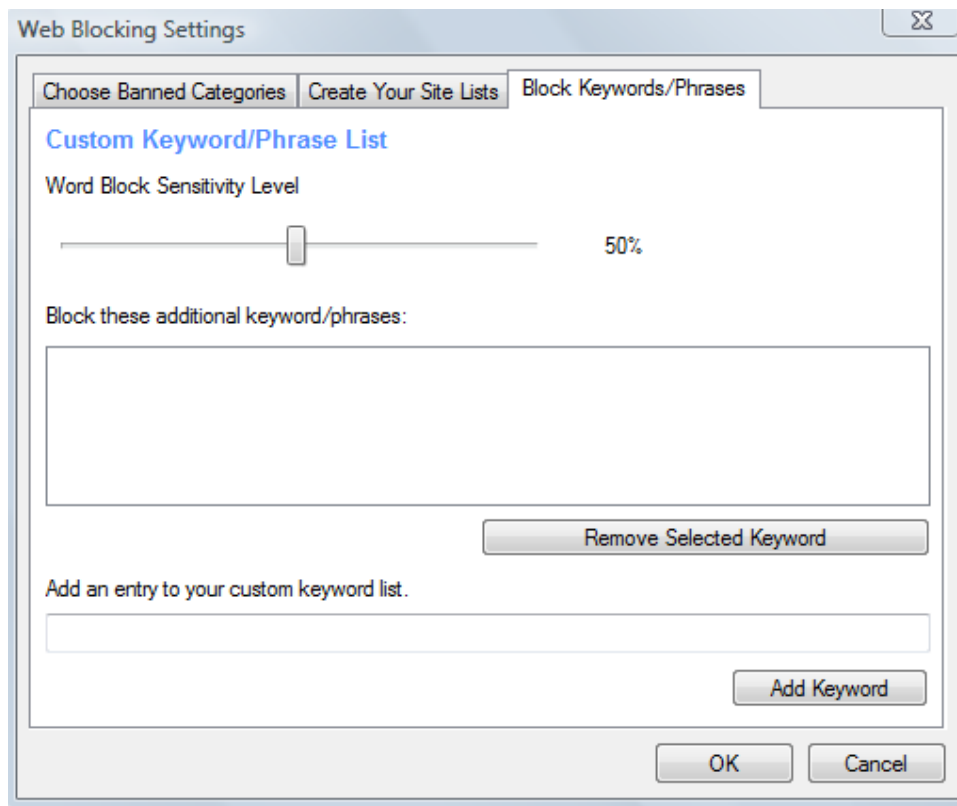
### ***Allowing A Website***

To allow a specific site click the "Allow Site" button and type the URL into the "Site Address" box then click "Add Site."

### ***Removing Websites***

Simply highlight the URL that appears in either the Banned or Allowed Websites box and click "Remove Selected From Allowed/Banned."

## Keyword Based



This function can be very effective if used correctly and is a powerful tool in providing safe access to Internet search engines. KSS Parental Control includes several dictionaries of both profanity and sexually suggestive words that can automatically be banned.

If the words in our dictionary appear in the URL, that site will be blocked. To add custom words to the word/phrase dictionary, type your word/phrase in the "Add an entry to custom keyword list" box and click "Add Keyword."

### *A note of caution*

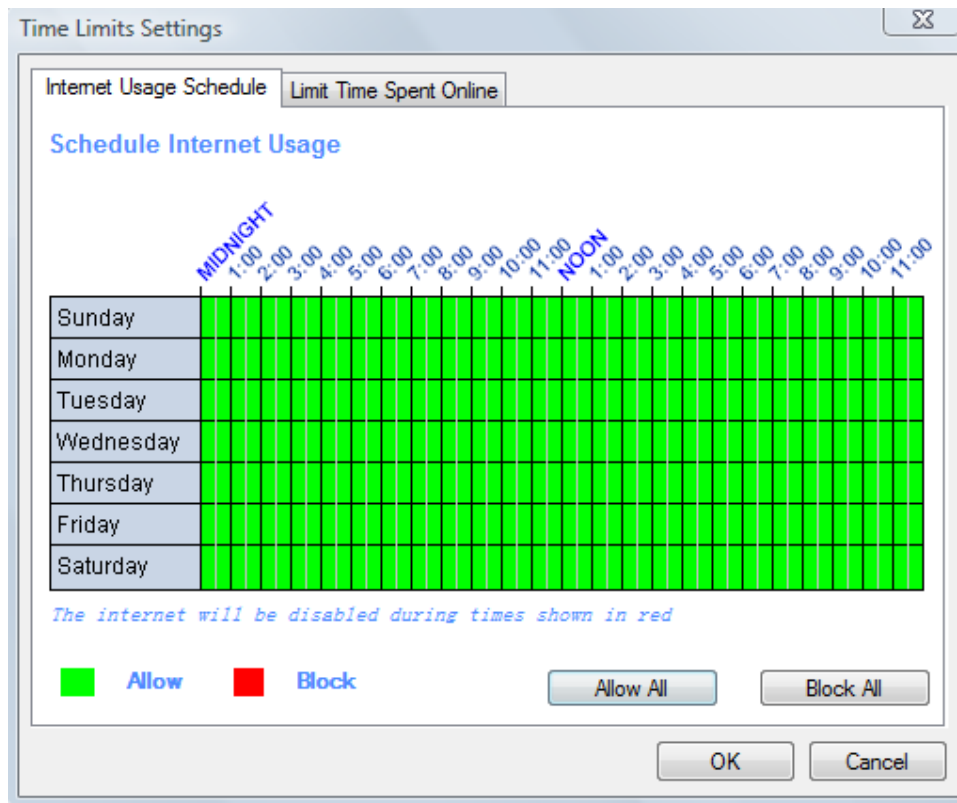
When adding your own words to the dictionary, this program can get very restrictive very quickly. For instance, if you block the word "soft" then KSS Parental Control will also block out any derivative of the word "soft," including websites that use the word "software" or "softball." The program is built this way to be as fail safe as possible for our users and requires the person with administrative rights to carefully choose customized blocked words and phrases. We advise you use terms that are at least four letters.

## Time Limits

Six year-old Abby argues when you ask her to log off of her favorite game site (after three hours of online playing time) and 16 year-old Josh is sneaking online during his homework time to chat with friends. This is where time limits come into play. Not only do time limits help you monitor the time spent online, they help a family set up ground rules for Internet usage so that clear expectations exist in the home. The KSS Time Limit feature provides two different ways to control the time individuals spend online – through allowing scheduled Internet usage times and limiting the total amount of time spent online.

### Schedule Internet Usage Times

This section of Time Limits allows you to configure certain times of day in which Internet access is restricted. To configure restricted time periods, select a specific user in the list at the left of the page and highlighting the user's name. Click "Schedule Internet Usage".



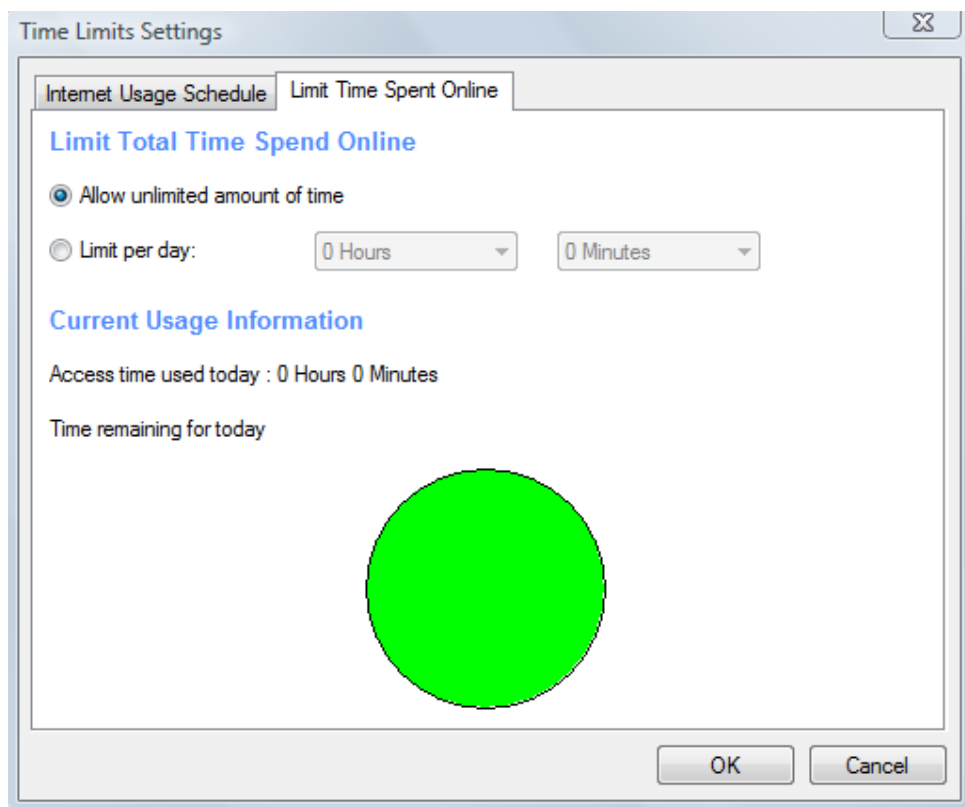
On the green matrix, choose the day of the week and the time of day and click on the boxes of time (1/2 hour increments) you wish to block. The blocked times will be highlighted in red. Anything green indicates times in which the Internet can be used. You can also click, hold and drag your mouse to block out several hours. To release time increments, re-click on the red block of time and it will return to green. Click "OK" button once you've decided on the times you wish

to block.

**Note:** KSS Parental Control checks time based on the time on our servers. Therefore, if teenage Josh attempts to go into his computer and change the time settings to circumvent the time limits mom has set, the KSS server will still block him according to your time zone.

## Limit Time Spent Online

This section of Time Limits allows you to control the amount of time that a KSS user may spend online per day. For example, when 14 year-old Kristin is allowed one hour of online time a day but is only allowed to get online from the time she gets off the school bus until dinnertime, mom or dad can call out that window of time with this function. To configure daily time limits, click "Limit Time Spent Online" and specify usage hours. Click "OK" once you've decided upon your times.



**Temporary Time Extensions:** If you would like to grant a KSS user a temporary extension to their time limit for one day, it's easy: Right click the KSS Tray Icon, select Time Control, and choose "Extend remaining time." The KSS user must be logged in for this option to be available. You will be prompted for your administrator password. This extension will only be valid for one day. The next day, the normal time limit will resume.

## Email Blocking

More and more, it's important to be aware of and even monitor the "communities" kids create online. A popular communication tool used by most everyone today is electronic mail, or email. While email is used by friends, family and schools to connect and inform, there are also individuals and groups that use email to transmit inappropriate conversation and content. KSS helps you control exactly who/what comes into your home via email. KSS email blocking will also log the email addresses of mail sent and mail received. This is a very stringent control but very effective in keeping your home free of unsafe email content.

**Note:** accounts not setup as an Approved Email Account will not be able to be checked when Email Blocking is turned on.

## Managing Email Contacts

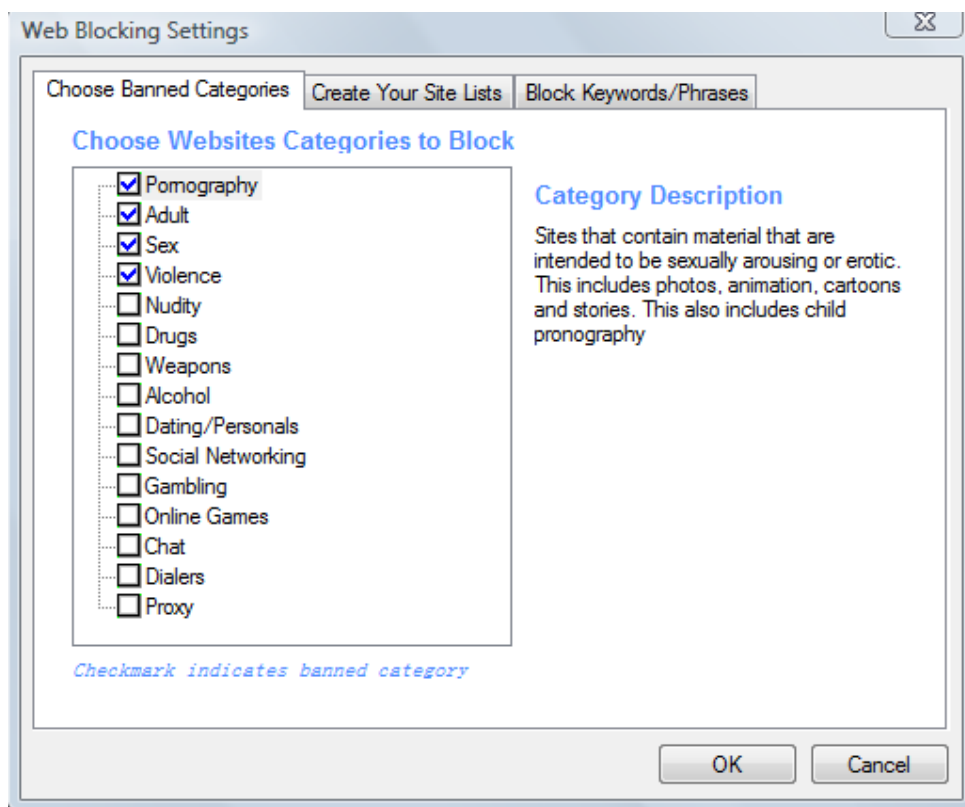
The screenshot shows a dialog box titled "Email Blocking". It has a close button in the top right corner. The dialog is divided into two sections. The top section, "Approve Email Contacts", has two radio buttons. The first is selected and labeled "default is allowed to send and receive email with all contacts.". The second is labeled "default is only allowed to send and receive email with contacts below:". Below the second radio button is a large empty white box. To the right of this box is a button labeled "Remove Selected Email Contact". The bottom section, "Approve A New Contact", has two input fields: "Person's Name:" and "Email Address:". To the right of the "Email Address:" field is a button labeled "Add Contact". At the bottom of the dialog are "OK" and "Cancel" buttons.

KSS allows you to manage exactly whom your child can send email to and who is allowed to send e-mail to your child. Highlight the user's name on the left of the page, then click "Approve Email Contact". Next, enter the approved person's name and email address in the "Approve A New Contact" box. Click "Add Contact" to add this contact. You can remove names at anytime by clicking the "Remove selected email address" indicated below the large white box that houses approved email contacts.

## Program Controls

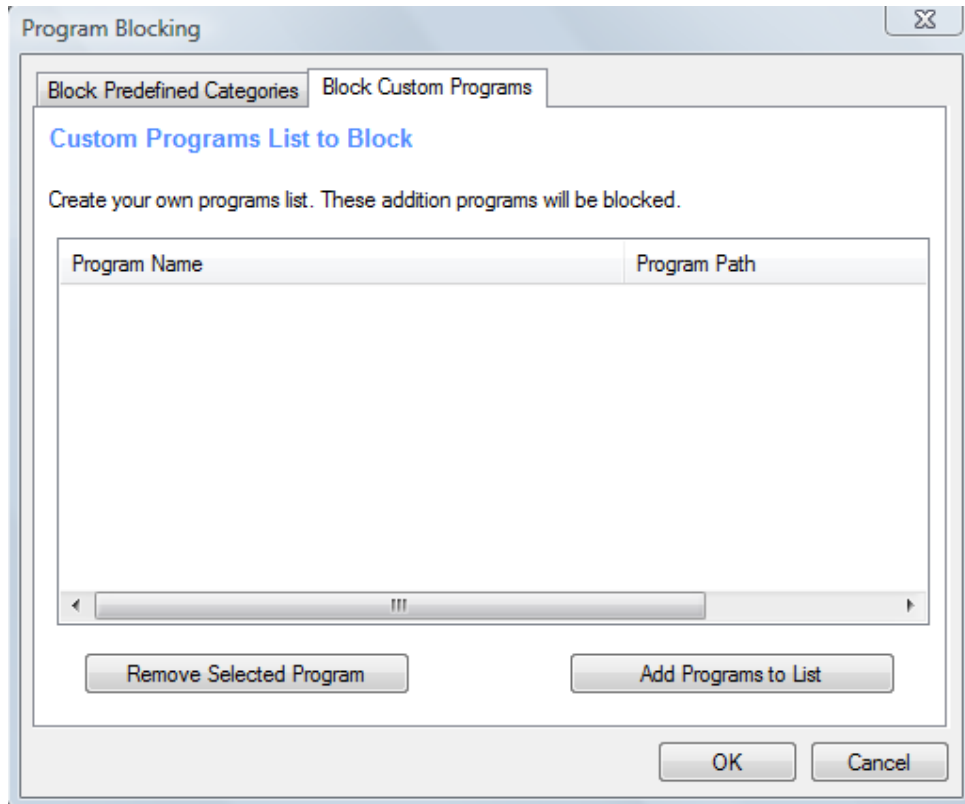
Program Blocking allows you to select types of programs you want to block from communicating from your computer to the Internet. Programs such as instant messengers, certain computer games, media players, newsgroups, email, FTP, although widely used, can be potential vehicles for receiving inappropriate, illegal or even dangerous content over the Internet. Using this feature allows you to control your privacy and safety while ensuring that no illegal activity (like music swapping) occurs. KSS Parental Control allows you to select entire categories to block or individual programs. If what you want to block is not in the default list, you can add an application to block.

## Category Based



When you click each individual category in the list box, the 'Information' section to the right of the list box changes out with a brief description of each category.

## Block Custom Programs



Click the button "Add Programs to List", then the scroll down list shows programs from your own computer that you can block. Highlight the application you want to block and click, "Block" and the application will be added to your custom list of blocked programs. To add other programs, click "Browse" to select an application file you want to block.

# Activity Monitoring

KSS Parental Control records every detail of what they do on the computer - their chats, instant messages, emails, the web sites they visit, what they search for, what they do on MySpace, the pictures they post and look at, the programs they run and much more. And because of its advanced surveillance screen snapshot features, you get to see not only WHAT they do, but the EXACT order in which they do it, step by step.

**KSS Parental Control Reports Viewer**

Home Register Help

2010年1月

星期日	星期一	星期二	星期三	星期四	星期五	星期六
27	28	29	30	31	1	2
3	4	5	6	7	8	9
10	11	12	13	14	15	16
17	18	19	20	21	22	23
24	25	26	27	28	29	30
31	1	2	3	4	5	6

Screen Snapshots  
 Websites Visits  
 Email Usage  
 Instant Messenger Logging  
 Program Usage

Web Category	Hits	Description
Others	2...	Sites that has not categorized
Pornography	2	Sites that contain material that are intended to be sexually arousing or erotic. This includes photos, animation, cart...
Adult	2	Sites that the author or publisher labels as being strictly for adults. Such labels include "Adult Only", "You must be ...
Social Networking	6	Sites that intend for social communication
Online Games	11	Sites that offer online games and related information such as cheats, codes, demos and emulations. The Games c...
Chat	33	Sites that offer access to online chat rooms, or allow users to download chat software that enables the online po...

Detail

## Screen Snapshots Recording

Advanced surveillance screen snapshot recording allows you to see not only what your children do on the PC and Internet, but the EXACT order in which they do it, step by step.

## Chat/IM Activity Recording

With the Chat/Instant Message recorder built into KSS, chat conversations and instant messages are automatically recorded and saved for your later review.

## Web Site Activity Recording

KSS continually monitors every web page that is accessed on the computer and saves a chronological record for your review. Now you can see not only where they go online, but how long they spend on the web page and how frequently they visit the web site.

## **Email Activity Recording**

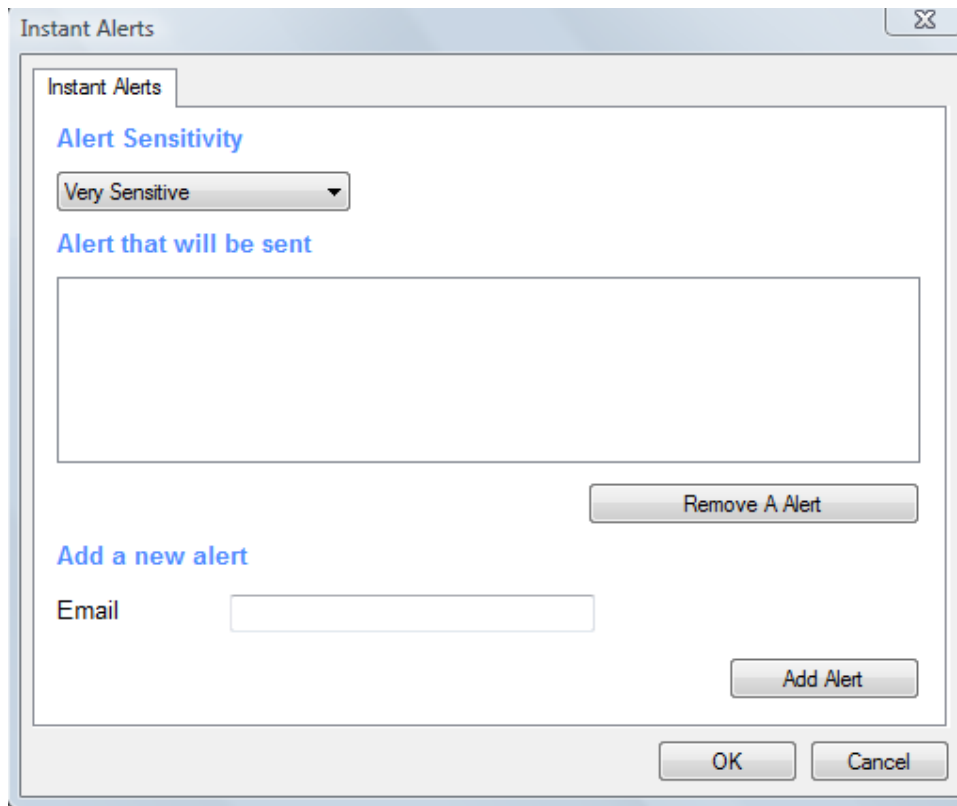
KSS automatically saves a copy of every email sent or received, with ANY email program, to a hidden location on the computer. Even when they delete their email, KSS will keep a copy for you to review.

## **Program Activity Recording**

KSS provides the ability to record every program (or application) run on the computer you are monitoring. Find out if your kids are playing games when they are supposed to be doing their homework.

## Instant Alerts

Perhaps the only thing better than deciding to purchase a filtering software program is the first time that program actually communicates to you personally when a user attempts to access any inappropriate content. Fast and efficient, KSS Parental Control will send you instant notifications via email.



## Alert Sensitivity

KSS Parental Control allows you to choose the sensitivity of the monitoring that you want. The higher the sensitivity, the more alerts you will receive based upon the amount of restricted content a user accesses within a set period of time. Simply go to the 'Alert Sensitivity' pull down bar and choose your level of sensitivity: Less Sensitive, Normal, Very Sensitive. If you find you are being alerted too often or not enough, you can change the setting.

## Email Setting

Enter the recipient's "Email Address" then click the "Add Alert" button. The email address will appear in the "Alerts that will be sent" box.

## User Management

KSS Parental Control allows you to create multiple users and apply different settings to each user. To prevent tampering, all KSS Parental Control settings are stored on our secure servers. Every user has unique usernames and passwords and this becomes important when dealing with children of different ages in one household. For instance, KSS Parental Control will prompt 14-year-old Kristin to give her username and password when she logs on to the Internet. This is important so that she doesn't try to piggyback on her older brother's time limits or access any additional websites he is allowed to enjoy.

The screenshot displays the KSS Parental Control web application. The top navigation bar includes "Home", "Purchase", and "Help" buttons. The main content area is titled "Account List" and shows a list with one entry, "default". Below the list, there are four action buttons: "Add", "Delete", "Clone", and "Edit", which are circled in red. To the right, the "default's Settings" section is visible, featuring several configuration options: "Web Blocking" (Choose Banned Categories, Create Your Site Lists, Block Keywords/Phrases), "Time Limits" (Internet Usage Schedule, Limit Time Spent Online), "Email Blocking" (Approve Email Contacts), "Program Blocking" (Block Predefined Categories, Block Custom Programs), "Activity Monitoring" (View Reports, Configuration), and "Instant Alerts". The bottom left corner shows license information: "License type: Trial for 1 computer(s)", "Expiration date: (this license is expired)", and two buttons: "I have a new license." and "I want to purchase a license."

## Add a New User

Sign in with your administrator account, to add a user, click "add" under the account list section on the left. Complete the user profile information (user name, email address, password, etc.), then click OK.

The following table outlines the user profile options:

Field	Description
Username	The name the user enters to sign in to KSS Parental Control. User names must be between 2 and 20 characters in length.
Password	The password the user enters to sign in to KSS Parental Control. Passwords must be between 3 and 13 characters in length. Passwords are case sensitive. Numbers and alpha characters can be combined.  <b>Note:</b> We recommend you keep a list of passwords and the corresponding user names in a safe place for reference. However, the administrator can change a password for any user, at any time, which should eliminate the fear of losing or forgetting passwords for access.
Auto Windows Login	Select this option if you want KSS Parental Control to employ a user's Windows login credentials to automatically log in to their personal KSS profile for Internet access. From the Auto Windows Login drop-down list, select the Windows account you want to associate with the user's profile. Once this association has been made, the user only has to log in to Windows and should not be prompted to log in to KSS separately. Please be aware that this association is not automatically synchronized to other computers in your household. If a family member has Windows accounts on multiple computers, you must configure the Auto Windows Login option for that user on each computer.

## Duplicating a User Profile

KSS Parental Control allows you to duplicate settings from existing user profiles to create new user profiles. When you duplicate a user profile, the filter settings and time controls for the selected profile are applied to the new profile. To duplicate a user, just click "Clone".